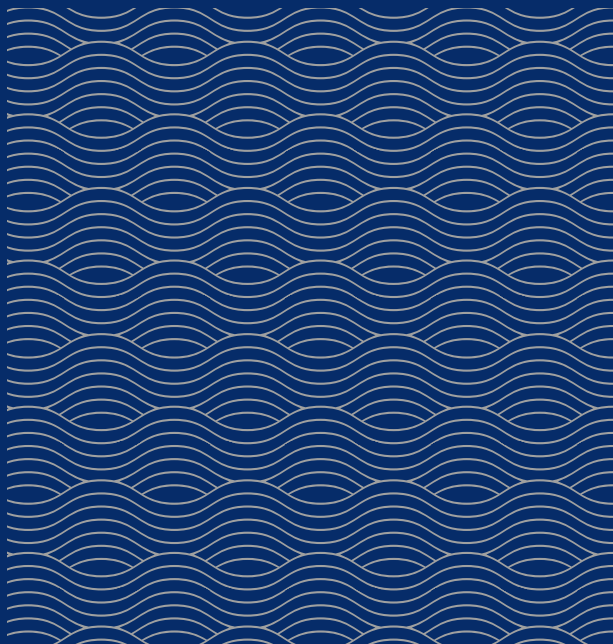
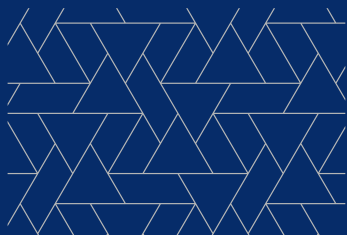


INHA UNIVERSITY



INHA UNIVERSITY AT A GLANCE

BEST
UNIVERSITY
IN KOREA

8TH

JOONANG ILBO'S
UNIVERSITY RANKING

AACSB
ABEEK

ACCREDITATION



FOUNDED IN 1954

ENROLLED
STUDENTS
20,289

INTERNATIONAL
STUDENTS
1,585

INTERNATIONAL
STUDENT'S
NATIONALITIES
77

FACULTY
MEMBERS
1,804

OVERSEAS SISTER
UNIVERSITIES
321

INTERNATIONAL
EXCHANGE
STUDENTS
1,251

EXTERNAL RESEARCH
FUND^(US\$ MILLION)
100.6

9

COLLEGES

2

SCHOOLS

63

UNDERGRADUATE
PROGRAMS

CONTENTS

INHA UNIVERSITY AT A GLANCE

BRIEF HISTORY

STUDY PROGRAMS

- Bachelor's Program
- Master's and Doctoral Program
- Statistics

INTERNATIONAL EXCHANGE & COOPERATION

- International Center
- Information for Exchange Students
- Summer School
- Korean Language Program

CONTACT INFORMATION

LOCATION

BRIEF HISTORY

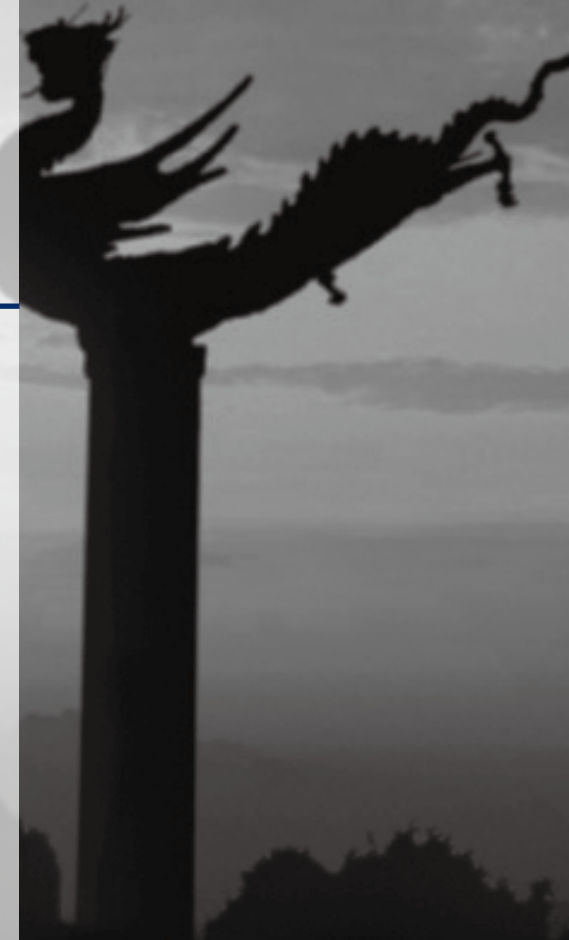
1900s

- 1952** Dr. Syng-Man Rhee, the first President of Korea, proposed the establishment of a technical institution in honor of the 50th anniversary of Korean emigration to Hawaii. The name "Inha" came from the first letters of "Incheon" and "Hawaii."
- 1954** Inha Institute of Technology was founded in the city of Incheon with 180 new students in 6 departments.
- 1958** The Graduate School was opened offering post-graduate degrees.
- 1968** Hanjin Group took over the management of the institute with Dr. Choong-Hoon Cho, Hanjin Group's founder, appointed the Chairman of the Board of Trustees.
- 1972** The institute was elevated to a university status, and assumed its current name of Inha University.
- 1996** Inha University Hospital was opened with 750 beds.
- 1997** Dr. Yang-Ho Cho, Chairman and CEO of Korean Air, became the new Chairman of the Board of Trustees.

2000s

- 2000** The student dormitory, Woongbi-Jae, opened. The Graduate School of Information Technology and Telecommunications was founded.
- 2003** Jungseok Memorial Library and Inha Hi-Tech Center were opened.
- 2006** The Graduate School of Logistics was founded.
- 2007** Ranked in the top 10 nationally and top 500 globally (evaluated by the JoongAng Daily and the Times-QS respectively). Contracted research funding of KRW 100 billion achieved.
- 2009** The Law School and School of Medicine were opened.
- 2010** MOU signed for the establishment of a new Songdo campus with Incheon Free Economic Zone.
- 2011** Selected as the best university in Korea in 'the College Assessment by IT industry'. Ranked No. 5 in graduate employment rates. Awarded at the National Quality Management Convention for top quality management.

- 2014** College of Business Administration received AACSB Accreditation. Inha University in Tashkent(IUT), Uzbekistan was opened. Construction of 60th Anniversary Memorial Hall begins
- 2015** Selected as a university for the IPP(Industry Professional Practice)-type work-study dual program by the Ministry of Employment and Labor. Ranked as the best university in Industry-Perspective University Evaluation by the Ministry of Education in the areas of energy, environment and biomedicine. Opening of the Inha University Station on the Suin Line. Ranked 10th in the University Rankings by the JoongAng Ilbo
- 2016** Ranked 8th in the University Rankings by the JoongAng Ilbo
- 2017** First graduates of Inha University in Tashkent(IUT)
- 2018**



STUDY PROGRAMS

BACHELOR'S PROGRAM

College of Engineering

Aerospace Engineering
Architectural Engineering
Architecture
Biological Engineering *
Chemical Engineering *
Civil Engineering *
Computer Engineering
Electrical Engineering *
Electronic Engineering *
Energy Resource Engineering *
Environmental Engineering *
Geoinformatic Engineering
Industrial Engineering *
Information and Communication Engineering *
Materials Science and Engineering *
Mechanical Engineering *
Naval Architecture & Ocean Engineering *
Polymer Science & Engineering

College of Natural Sciences

Biological Sciences
Chemistry
Food & Nutrition
Mathematics
Ocean Sciences *
Physics *
Statistics

College of Business Administration

Asia Pacific School of Logistics *
Business Administration *
Global Finance and Banking *
International Trade

College of Education

Education
English Language Education *
Korean Language Education
Mathematics Education
Physical Education
Social Studies Education

College of Social Sciences

Child Studies
Communication and Information *
Consumer Science
Economics *
Political Science and International Relations
Public Administration *
Social Welfare Studies

College of Humanities

China Studies
Cultural Contents & Management
English Language & Literature *
French Language and Culture
History
Japanese Language and Culture
Korean Language and Literature
Philosophy

College of Medicine

Medicine
Nursing
Pre-medical Studies

School of Arts & Sports

Design Convergence
Fashion Design & Textiles
Kinesiology *
Theater and Film Studies
Visual Arts

International School of Global Studies

College of Future Convergence

Banking & Finance
Industrial Business Administration
Mechatronics
Software Convergence Engineering

Frontier College

Departments marked with (*) offer English courses for foreign students

MASTER'S AND DOCTORAL PROGRAM

Engineering

Aerospace Engineering
Architectural Engineering
Chemistry and Chemical Engineering
Civil Engineering
Computer Science and Engineering
Electrical Engineering
Electronic Engineering
Energy Resources Engineering
Environmental Engineering
Geoinformatic Engineering
Industrial Engineering
Information & Communication Engineering
Marine Science and Biological Engineering
Materials Science and Engineering
Mechanical Engineering
Naval Architecture & Ocean Engineering
Polymer Science & Engineering

Natural Science

Mathematics
Biological Sciences
Clothing and Textiles
Food and Nutrition
Mathematics
Mathematics Education
Nursing
Physics
Statistics

Medical Science

Medicine

Inter-department program

Program in Science for FTA Policy and Business Cons
Program in Archaeology as Interdisciplinary Science
Program in Culture Management
Program in Digital Arts and Technology
Program in Energy Engineering
Program in Future Vehicle Engineering
Program in Global e-Governance
Program in Human Arts Technology

Program in Integrative Health Science
Program in Interactive Contents
Program in IT & Media Convergence Studies
Program in Multicultural Studies
Program in Photonics and Informatics
Program in Service Management & Engineering
Program in Sustainability Management
Urban Planning

Humanities & Social Science

Accounting
Business Administration
Communication & Information
Consumer & Child Studies
Economics
Education
English Language & Literature
Francophone Studies •
Global Banking & Finance •
History
Intellectual Property Law
International Trade
Japanese Language & Culture
Korean Language and Literature
Korean Language Education
Law
Political Science & International Relations
Program in Philosophical and Cultural Studies of Technology
Public Administration
Sinology •
Social Studies Education

Arts & Sports

Kinesiology
Visual Arts •
Visual Communication Design •

Graduate School of Logistics

Master of Global Logistics Management
Master of Logistics Management
Master of Science in Logistics
Ph.D in Logistics

Law School

Medical School

Graduate School of Education

Graduate School of Business Administration

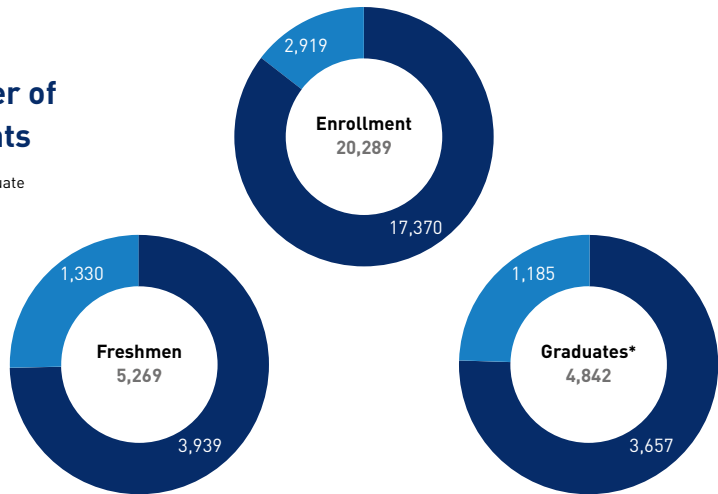
Graduate School of Policy Science

Graduate School of Engineering

* Master's and doctoral degrees are offered in all fields except programs with (•), where only master's degrees are available.

Total Number of Students

■ Undergraduate
■ Graduate



Number of graduates in August 2017 and February 2018

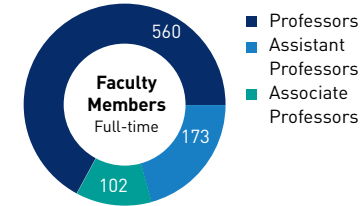
Bachelor's Program

College	Enrollment
College of Engineering	7,578
College of Natural Sciences	1,293
College of Business Administration	2,469
College of Education	948
College of Social Sciences	1,620
College of Humanities	1,793
College of Medicine	523
School of Arts and Sports	806
International School of Global Studies	87
College of Future Convergence	253
Total	17,370

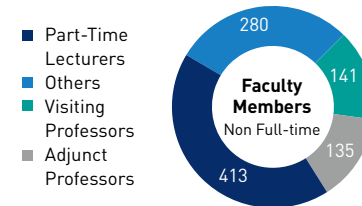
Master's / Doctoral Programs

Graduate School	Enrollment
The Graduate School	1,663
Graduate School of Logistics	112
Law School	160
Medical School	100
Graduate School of Engineering	147
Graduate School of Education	468
Graduate School of Business Administration	130
Graduate School of Policy Science	139
Total	2,919

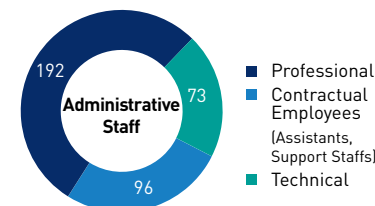
Faculty by Category



Total 835



Total 969



Total 361

Land and Buildings

Land (Unit : m²)

Main Campus 361,087
* Affiliated Areas 107,712

Total 468,799

* Affiliated Areas include Hospital, Middle/High Schools, Training Center, etc

Buildings (Unit : m²)

Educational Facilities 199,221
Support Facilities 43,672
Research Facilities 45,985
Affiliated Facilities 2,072
Others 5,018

Total 295,968

Collections at Jungseok Memorial Library

Volumes 1,649,539 Video 4,968
Academic Journals 735 Audio-Book 690
E-Journals 13,124
Web DB 30
E-Books 86,323
UOD 12,922
VOD 25,122
Multi Media DVD 11,425
Contents CD-ROM 14,621

Publications

SCI(E) Paper Publications

Year	2015	2016	2017
Number of Papers published	1,398	1,553	1,522

SSCI Paper Publications

Year	2015	2016	2017
Number of Papers published	71	74	79

INTERNATIONAL EXCHANGE & COOPERATION

INTERNATIONAL CENTER

<http://internationalcenter.inha.ac.kr>

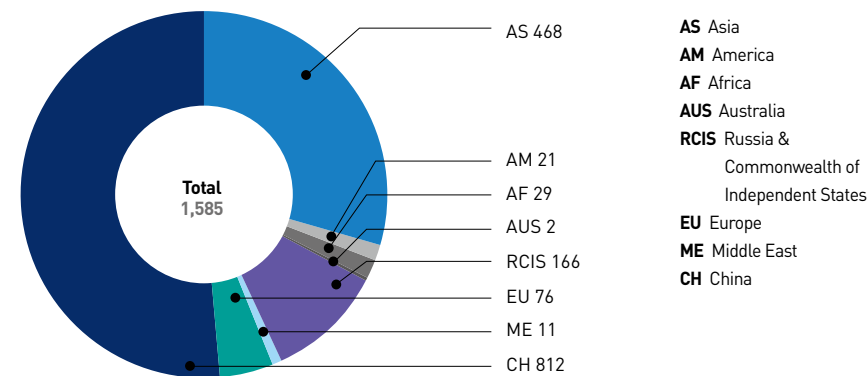
The International Center deals with cooperation activities between Inha University and other international universities & institutes, creates the partnership, exchanges students and faculty members and develops international curricula with overseas sister universities. In addition, the International Center offers administrative support to the international students and faculty members, who will be faced with many opportunities and responsibilities in Korea.

International Center's Service

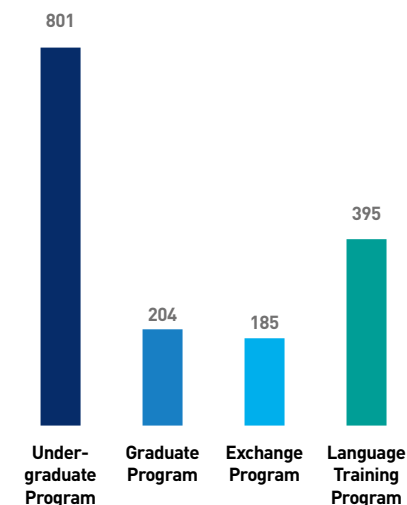
- Creating international exchange agreements with overseas universities
- Student and faculty exchanges with partner universities
- Support for domestic and worldwide scholarships
- Assistance for immigration affairs and face to face student counselling
- Various events and field trips for international students



Number of International Students by Region (As of April 2018)



Number of International Students by Program (As of April 2018)



Number of International Students by College (As of April 2018)

Undergraduate Program	College of Engineering	198
	College of Natural Sciences	27
	College of Business Administration	313
	College of Social Science	80
	College of Humanities	70
	College of Medicine	4
	School of Arts and Sports	20
	International School of Global Studies	89
	Sub-Total	801
Graduate program	The Graduate School	195
	Graduate School of Logistics	8
	Graduate School of Business Administration	1
	Sub-Total	204
Exchange Program	Exchange Program	185
Language Training Program	Language Training Program	395
Total		1,585

INFORMATION FOR EXCHANGE STUDENTS

Academic Schedule

	Spring Semester	Fall Semester
Nomination	Early Sept. ~ Mid Oct.	Early March ~ Mid April
Online application	Early Sept. ~ Late Oct.	Early March ~ Late April
Arrival date	Late February	Late August
Semester Period	Early March ~ Mid June	Early Sept. ~ Mid Dec.

Free Korean language courses available for exchange students:

- Basic Korean
- Intermediate Korean
- Sino-Korean Characters for Foreign Students
- Reading and Writing in Korean for Foreign Students
- Presentation and Speaking in Korean for Foreign Students
- Korean in Mass Media for Foreign Students
- Korean Folk Tales and Literature for Foreign Students
- Advanced Korean for Foreign Students
- Survival Korean Language Class

Campus Housing

- On & Off Campus Housing is guaranteed for exchange students.
- Estimated Living Expense: USD 600~800/ per month including room and meals

*For more detailed information, please visit the international center website.



SUMMER SCHOOL

<http://summer.inha.ac.kr>

Inha University annually offers a Summer School program as a part of its devotion to a more enhanced global education. The summer program was first initiated in 2004 to provide overseas college students with hands-on opportunities to learn the Korean language and experience the cultural and academic life in Korea. Since then, the program has continued to develop and be enriched with more unique and diverse activities, while attracting more participants every year.

This short term, intensive program mainly consists of classroom lectures, visits to corporate sites, cultural sessions and field trips to cultural and historic places in general. Through the coursework, international students will have opportunities to better understand the dynamic aspects of the past, present and future of the Korean society.

Courses

Required Korean Culture Workshop

- Basic Korean
- Intermediate Korean
- Advanced Korean
- Korea and East Asian International Relations
- Introduction to Korea and Its Culture
- Introduction to K-pop Drama & Its Multicultural Aspects

Electives

- Introduction to Health and Wellness in Korea
- Introduction to the Korean Business and Economy
- Reading Korean Culture Through Korean Dance
- Introduction to Korean Cinema
- New Technology in Daily Life
- Learning Korean Through K-Dramas

KOREAN LANGUAGE PROGRAM

<http://ltc.inha.ac.kr>



Training over 1,600 international students from 40 countries annually, the Inha Language Training Center has firmly secured its position as a leading Korean language program in Korea. Steadily gaining recognition for its well-organized curriculum, professional teachers, and systematic management of academic affairs, the Korean language program at the Inha LTC was honored when selected as one of the 'Best Korean Language Schools' by the Korean Government. As a result, Inha's Korean language program has been entrusted with the instruction of many elite Korean Government scholarship students with strong support from the Government. Inha University is doing its utmost to be a pivotal Korean language institute in the era of globalization and multi-cultural societies, through the development of tailor-made programs, unique teaching methods and advanced study materials while cultivating new relationships with the prestigious overseas educational institutes.

Course Information

Course Level	Level 1,2 : Beginner Level 3,4 : Intermediate Level 5,6 : Advanced	
Course Term	10 Weeks	
Class Hours / Week	20 Hours	-Morning 09:00-13:00 -Afternoon 13:30-17:30

Application & Registration Deadline

Semester	1st Day of Semester	Document Submission Deadline	
		Application	Registration
Spring	2nd Week of March	3rd Week of January	4th Week of January
Summer	2nd Week of June	3rd Week of April	4th Week of April
Fall	2nd Week of September	3rd Week of July	4th Week of July
Winter	2nd Week of December	3rd Week of October	4th Week of October

* The schedule above is subject to change without prior notice at sole discretion of the center.

CONTACT INFORMATION

Inha University

100 Inha-ro, Michuhol-gu, Incheon 22212, Korea
<http://www.inha.ac.kr>

International Center

Tel +82-32-860-7030-8
Fax +82-32-867-7222
E-mail orir@inha.ac.kr

Undergraduate Admissions

Tel +82-32-860-7221-4
Fax +82-32-860-7210
E-mail apply@inha.ac.kr

Graduate School

Tel +82-32-860-8383-9
Fax +82-32-865-8623
E-mail graduate@inha.ac.kr

Graduate School of Logistics

Tel +82-32-860-8224-5
Fax +82-32-860-8226

Language Training Center / Korean Language Program

Tel +82-32-860-8273
Fax +82-32-863-2930
E-mail ltc@inha.ac.kr

Jungseok Memorial Library

Tel +82-32-860-9014
Fax +82-32-862-3999
E-mail library@inha.ac.kr

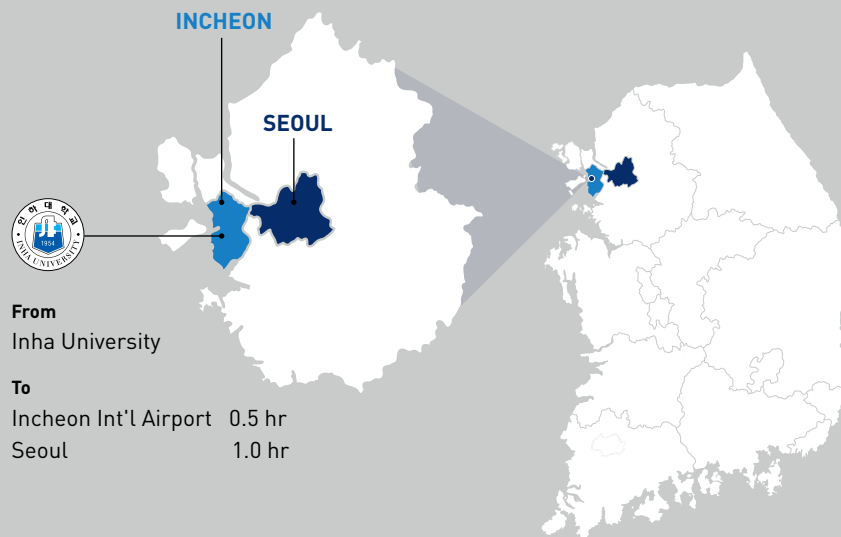
Housing

Dormitory 1 +82-32-860-8317,8319
Dormitory 2 +82-32-860-7273,7274

Inha University Hospital

Tel +82-32-890-2114
Fax +82-32-890-3000

LOCATION





INHA UNIVERSITY

International Center, Inha University

100 Inha-ro, Michuhol-gu, Incheon 22212, Korea